

Connecting Epson TM-T88IV Splits Printer

Wait until PC is fully started and printer turn on

Connect USB cable to **top left USB port**

Select **Competition Day**
Then select **Read Chips**

Print Labels option screen should display automatically

If it does not change setting here to **Automatic**

Printer option will then display. Printer should be **Epson TM-T88IV**; if not click **here**

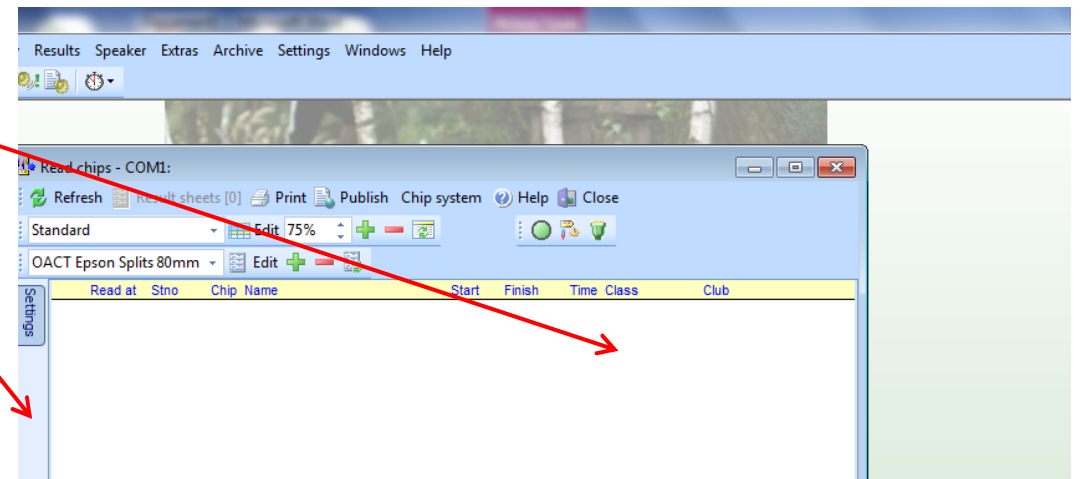
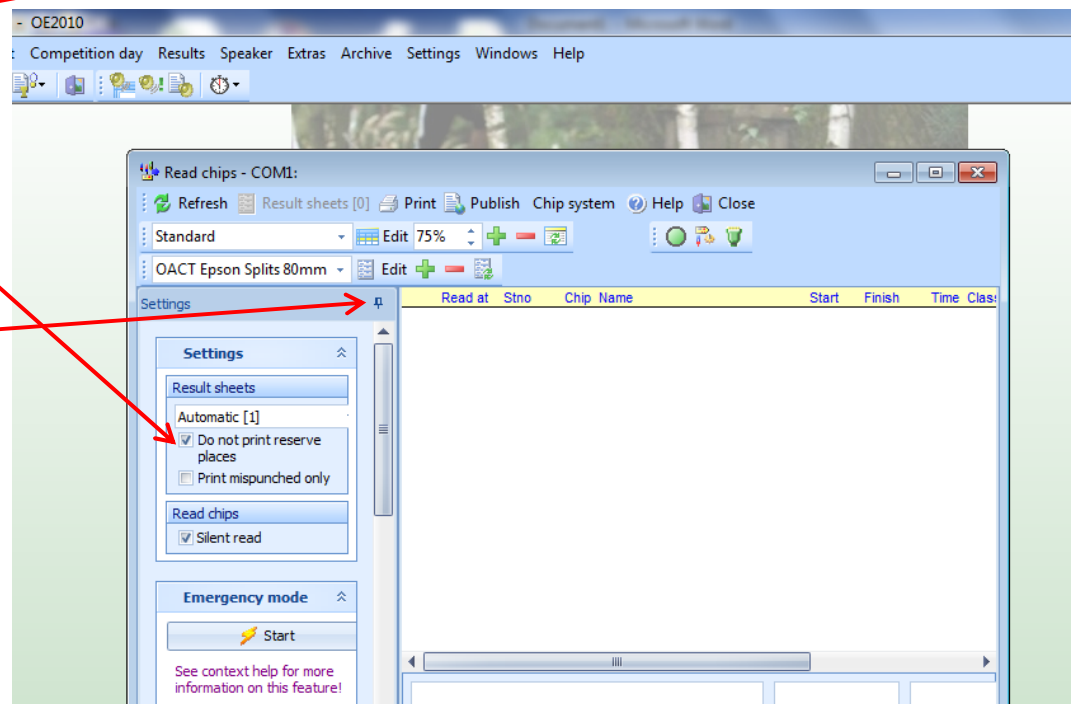
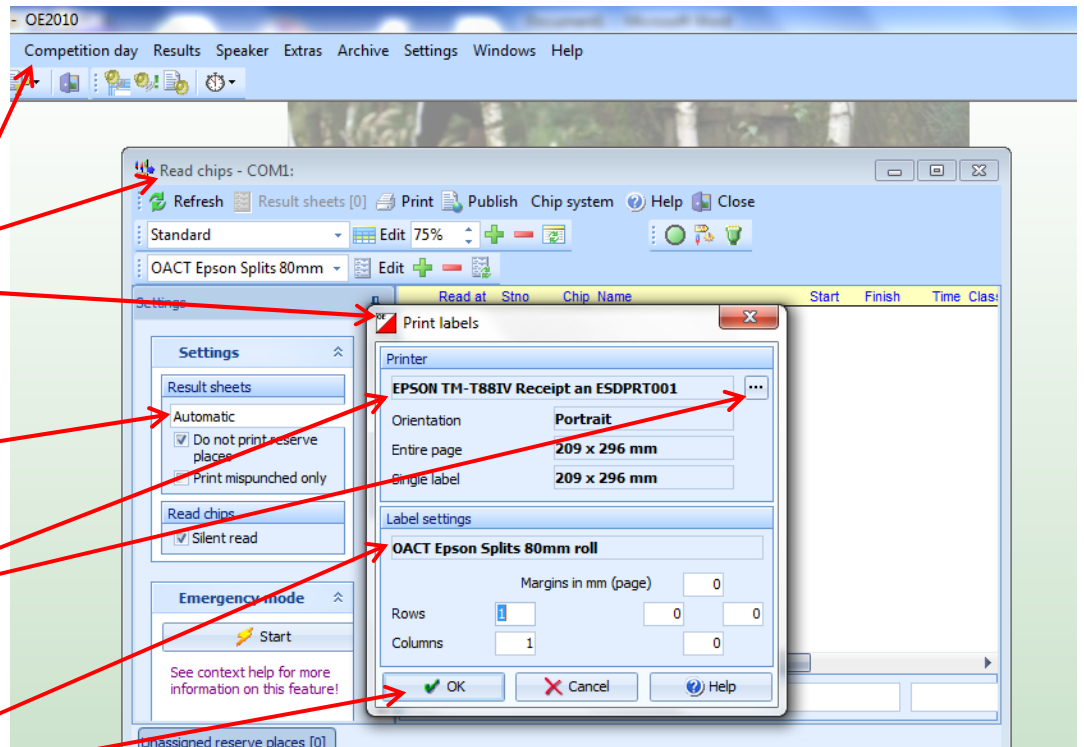
Label settings should be **OACT Epson Splits**

Click **OK**

Untick '**Do not print reserve places**' then 'Reserve' competitors will still receive their splits.

Unpin Pin by clicking on it

Move cursor to right and **Settings** window will minimise on the left



Connecting Epson TM-T88IV Splits Printer

Wait until PC is fully started and printer turn on

Connect USB cable to **top left USB port**

Select **Competition Day**
Then select **Read Chips**

Print Labels option screen should display automatically

If it does not change setting here to **Automatic**

Printer option will then display. Printer should be **Epson TM-T88IV**; if not click **here**

Label settings should be **OACT Epson Splits**

Click **OK**

Untick '**Do not print reserve places**' then 'Reserve' competitors will still receive their splits.

Unpin Pin by clicking on it

Move cursor to right and **Settings** window will minimise on the left

